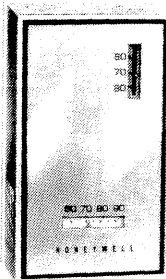


T921A,B,E-G Proportional Control Thermostats

T921 Thermostats provide 3-wire, low voltage proportional control for Series 90 (135 ohm) valve motors, damper motors, and balancing relays in heating or cooling system applications.

- ☐ T921A ☐ T921B
- ☐ T921E ☐ T921F
- ☐ T921G



- Accessory faceplates available for horizontal mounting of T921A,B,E models.
- COOL-HEAT changeover switch in the T921B.
- Night setback mechanism and switch in the T921E.
- A spdt (single pole double throw) Class 2 auxiliary switch in the T921F,G, which operates at the low (T921F) and high (T921G) end of the throttling range.
- A bellows element adjusts the potentiometer slider to regulate motor operation.
- Various temperature ranges are available.
- All models are available with a thermometer and a locking cover.

Specifications

TRADELINE® MODELS

TRADELINE® models are selected and packaged to provide ease of stocking, ease of handling and maximum replacement value. TRADELINE® model specifications are the same as those of the standard models except as noted below.

TRADELINE® MODEL AVAILABLE: T921A Thermostat for vertical or horizontal mounting.

TEMPERATURE RANGE AND SCALE: 56° to 84° F [13° to 29°].

ADDITIONAL FEATURES:

- TRADELINE® packed with cross-reference label and special TRADELINE® instructions.
- T6051A may be used in electric heat systems.
- They all include slotted sides and an add-on faceplate to allow the thermostat to be mounted horizontally. They also include the 127246A Adapter Plate Assembly for vertical mounting on a horizontal conduit box or for horizontal mounting on a vertical conduit box.

STANDARD MODEL

MODELS:

- T921A: Heating or cooling applications.
- T921B: Is the same as the T921A but includes a cool-heat changeover switch.
- T921E: Includes a switch and heater that provide a night setback of approximately 10° F [5.5° C].
- T921F: Includes an spdt low voltage Class 2 auxiliary switch that operates at the low end of the throttling range.
- T921G: Includes an spdt low voltage Class 2 auxiliary switch that operates at the high end of the throttling range.

SETTING ADJUSTMENT RANGE:

T921A,B,E-G: 56° to 84° F [13° to 29° C].

T921A,B,E-G: 13° to 29° C [56° to 84° F].

T921A: 42° to 75° F [5° to 24° C].

T921A,B: 66° to 95° F [19° to 35° C].

THERMOMETER: Bimetal. Scale ranges T921A only:

45° to 75° F [7° to 24° C]. All other models: 60° to 90° F [16° to 32° C], 15° to 35° C [59° to 95° F]. T921A is also available with a blank cover and no thermometer.

AUXILIARY SWITCH DIFFERENTIAL:

T921F: 2° F [1° C].

T921G: 1° F [0.5° C].

THROTTLING RANGE:

Fixed:

T921A: 2.5° F [1° C] midscale.

T921B,E: 4° F [2° C].

T921F: 6° F [3° C].

T921G: 5° F [2.5° C].

Variable: T921A model available with potentiometer for 5° to 6° F [2.5 to 3° C] throttling range.

ELECTRICAL RATINGS:

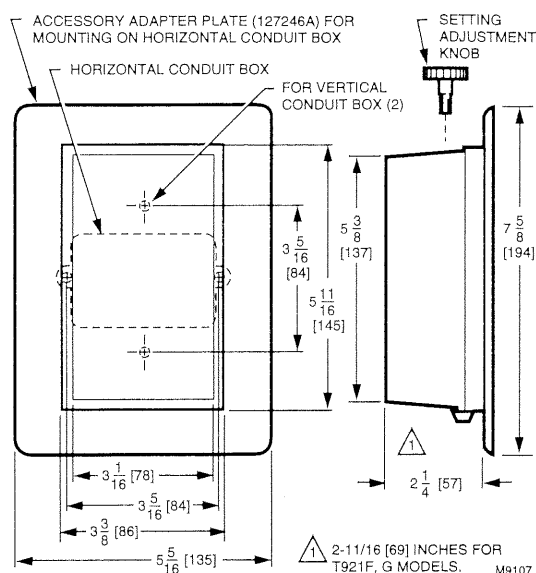
Voltage: 24 to 30 Vac.

Auxiliary Switch Contact Rating (When Used For Pilot Duty): 100 VA at 30 Vac.

DIMENSIONS: Refer to Fig. 1.

ACCESSORIES (ORDER SEPARATELY): 127246A Adapter Plate Assembly for mounting all models vertically on a horizontal conduit box. (T921 models are shipped with a faceplate for vertical mounting.)

Fig. 1—T921 approximate installation dimensions in in. [mm].



When mounting the T921A,B,E horizontally, see Table 1 to order the faceplate with the appropriate scal. NOTE: Do not mount the T921F,G horizontally.

34297B Thermostat Guard Assembly and 138541A Mounting Plate.

133722A Thermostat Guard (clear plastic cover).

133723A Thermostat Guard (beige plastic cover).

TABLE 1—ACCESSORY FACEPLATE.

Scale	Part No.
56° to 84° F [13° to 29° C]	135135A
13° to 29° C [56° to 84° F]	135135B
42° to 75° F [5° to 24° C]	135135C
66° to 95° F [19° to 35° C]	135135D
56° to 84° F [13° to 29° C]	135135C ^a

^a Blank faceplate.

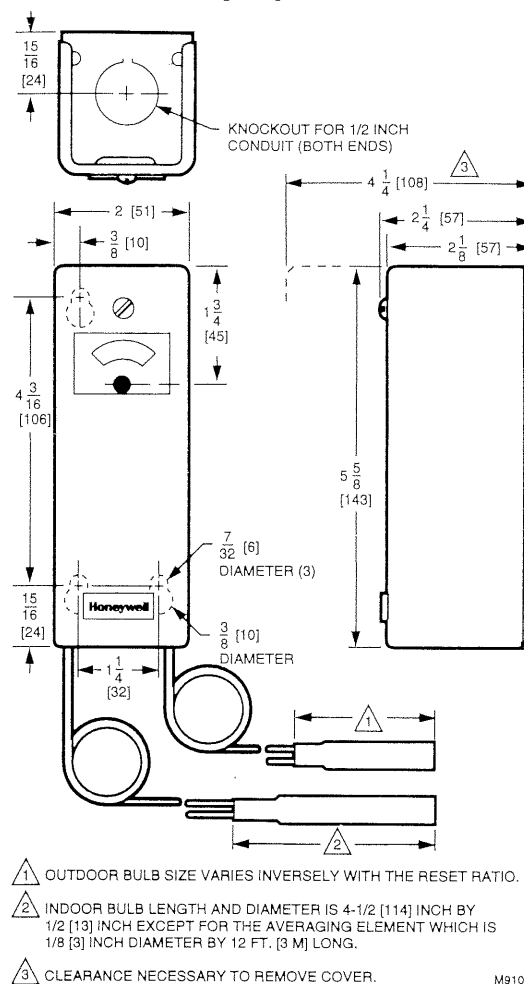
REPLACEMENT PART: 130224 Locking Cover Knob.

OPTIONAL SPECIFICATION (USING THE T991B):

Alternate proportional control similar to the T921A, but uses an outdoor temperature, automatic control point reset.

T991B with 3-1/2:1 reset and 50° to 120° F [10° to 49° C] temperature setting scale (when the outdoor bulb is at 60° F [16° C]).

Fig. 2—T991B approximate installation dimensions in in. [mm].



- 1 OUTDOOR BULB SIZE VARIES INVERSELY WITH THE RESET RATIO.
 2 INDOOR BULB LENGTH AND DIAMETER IS 4-1/2 [114] INCH BY 1/2 [13] INCH EXCEPT FOR THE AVERAGING ELEMENT WHICH IS 1/8 [3] INCH DIAMETER BY 12 FT. [3 M] LONG.
 3 CLEARANCE NECESSARY TO REMOVE COVER.

M9108

DIMENSIONS: Refer to Fig. 2.

ACCESSORIES:

Compression fittings, immersion wells: Refer to the appropriate specification or the TRADELINE® Catalog.

314439 Mounting Clips: For mounting a capillary tubing (averaging element) in a duct.

7640HX Averaging Element Mounting Kit: For mounting in existing installations where access to the duct is impractical.

Q615A Enclosure: To protect the device when mounted outside; splash proof.

801534 Calibration Wrench.

107324A Bulb Holder: For mounting the bulb in a duct.

34886A Outdoor Bulb Shield: To protect the outdoor bulb mounting.

Home and Building Control

Honeywell Inc.
 1985 Douglas Drive North
 Golden Valley, MN 55422

Home and Building Control

Honeywell Limited—Honeywell Limitée
 740 Ellesmere Road
 Scarborough, Ontario
 M1P 2V9

Helping You Control Your World

