

Panels

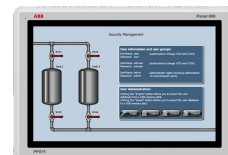
ABB Ability™ System 800xA® hardware selector



The Panel 800 family comprises user-friendly, intuitive, and ergonomic operator panels that combine slim, space-saving dimensions with a comprehensive range of advanced functions. Designed to make process automation easy, all panels are equipped with touchscreen operation with advanced functionality for process and equipment control.

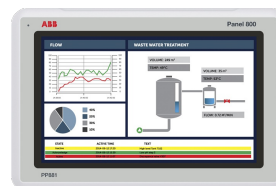
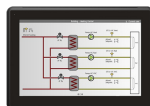
The Panel 800 family is configured using ABB's Panel Builder tool which contains a wide range of advanced functions.

A wide range of user-friendly, intuitive, and ergonomic operator panels for process automation systems gives you the right information at the right time, and in the right place. The Panel 800 family is configured using ABB's Panel Builder tool which contains a wide range of advanced functions. The functions are tested and developed with customer needs and preferences in focus.



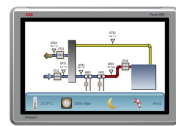
Specific feature ¹	Panel 800 6.2 2000 tags (Dongles)	Panel 800 6.2 250 tags (Dongles)	Panel 800 6.2 4000 tags (Dongles)	PP875
General info				
Article number	3BSE093565R1	3BSE093564R1	3BSE093566R1	3BSE092977R1
Processor	Standard PC running Win 7 or Win 10			ARM9 (1 GHz)
External storage media	Uses ordinary PC USB port.			2 GB (SSD), 1.5 GB free for application storage
Net weight (kg)	0.13 kg			0.8
Operating temperature	-30 °C to +70 °C			-10 °C to +60 °C
Category				Standard
Display type				Touch
Display size				7"
Brightness				350 cd/m²
Display resolution, ratio				800 x 480 (16:9)
Main memory				512 MB
Dimension WxHxD (mm)				204 x 143 x 50 mm
Power supply				+ 24 V DC (18 to 32 V DC)
Dimensions				
Dimension W×H×D (mm)				204 x 143 x 50 mm
Cut-out dimension W×H (mm)				187 x 126 mm
Mounting depth mm. (Including clearance)				43 (143)
Mounting				Panel Mount and VESA 75 × 75
Environment and certification				
RoHS compliance	DIRECTIVE/2011/65/EU			
WEEE compliance	DIRECTIVE/2012/19/EU			

¹ For detailed information on each module, please visit: 800xahardwareselector.com



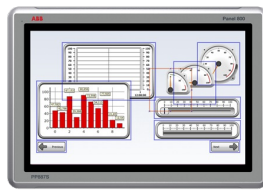
Specific feature ¹	PP875H	PP875M	PP881	PP883
General info				
Article number	3BSE092983R1	3BSE092982R1	3BSE092978R1	3BSE092979R1
Processor	ARM9 (1 GHz)			
External storage media	1 × SD card slot (or SDHC with latest image loaded)	1 × SD card slot (or SDHC with latest image loaded)	2 GB SSD, 1.5 GB free for application storage	2 GB SSD, 1.5 GB free for application storage
Operating temperature	-10 °C to +60 °C			
Category	Black		Standard	
Display type	Touch			
Display size	7"		10.1"	12.1"
Brightness	1000 cd/m²	500 cd/m²		400 cd/m²
Display resolution, ratio	800 x 480 pixels	800 x 480 (16:9)	1024x600 pixels	1280 x 800 pixels
Main memory	2 GB	512 MB	1 GB	
Dimension WxHxD (mm)	204 x 143 x 50 mm	204 × 143 × 50 mm	292 x 194 x 52 mm	340 x 242 x 57 mm
Power supply	24 V DC (18 to 32 VDC)	24 VDC (18-32 VDC)	+ 24 V DC (18 to 32 VDC)	
Dimensions				
Dimension W×H×D (mm)	204 x 143 x 50 mm	204 × 143 × 50 mm	292 x 194 x 52 mm	340 x 242 x 57 mm
Cut-out dimension W×H (mm)	189 x 128 mm	189 × 128 mm	275 x 177 mm	324 x 226 mm
Mounting depth mm. (Including clearance)	43 (143) mm		45 (145)	49 (149) mm
Mounting	Panel Mount, VESA 75 x 75	Panel Mount, VESA 75 × 75	Panel Mount, VESA 75 x 75	
Weight	0.8 kg		1.65 kg	2.6 kg
Environment and certification				
RoHS compliance	DIRECTIVE/2011/65/EU			
WEEE compliance	DIRECTIVE/2012/19/EU			

¹ For detailed information on each module, please visit: 800xahardwareselector.com



Specific feature ¹	PP886	PP886M	PP886R	PP887H
General info				
Article number	3BSE092980R1	3BSE092984R1	3BSE092985R1	3BSE092986R1
Processor	ARM9 (1 GHz)		ARM9 (800 MHz)	ARM9 (1 GHz)
External storage media	2 GB SSD, 1.5 GB free for application storage	1 × SD card slot (or SDHC with latest image loaded)	1 × SD card slot (or SDHC with latest image loaded)	1 × SD card slot (or SDHC with latest image loaded)
Operating temperature	-10 °C to +60 °C		-30 °C to +70 °C	
Category	Standard	Black	Rugged	
Display type	Touch			
Display size	15.4"			
Brightness	450 cd/m ²			1000 cd/m ²
Display resolution, ratio	1280 x 800 (16:10)	1280 x 800 pixels		
Main memory	1 GB			2 GB
Dimension WxHxD (mm)	410 x 286 x 61 mm		410 x 286 x 73 mm	
Power supply	24 V DC (18 to 32 VDC)			
Dimensions				
Dimension WxHxD (mm)	410 x 286 x 61 mm		410 x 286 x 73 mm	
Cut-out dimension WxH (mm)	394 x 270 mm			
Mounting depth mm. (Including clearance)	53 (153) mm		66 (166) mm	
Mounting	Panel Mount, VESA 75 x 75		Panel Mount	
Weight	3.85 kg		4.1 kg	
Environment and certification				
RoHS compliance	DIRECTIVE/2011/65/EU			
WEEE compliance	DIRECTIVE/2012/19/EU			

¹ For detailed information on each module, please visit: 800xahardwareselector.com



Specific feature ¹	PP887S	PP895
General info		
Article number	3BSE092987R1	3BSE092981R1
Processor	ARM9 (1 GHz)	
External storage media	1 × SD card slot (or SDHC with latest image loaded)	2 GB SSD, 1.5 GB free for application storage
Net weight (kg)		7.38 kg
Operating temperature	-30 °C to +70 °C	0 °C to +50 °C
Category	Rugged	Standard
Display type	Touch	
Display size	15.4"	21.5"
Brightness	1000 cd/m ²	250 cd/m ²
Display resolution, ratio	1280 x 800 pixels	1920 x 1080 pixels
Main memory	2 GB	2.0 GB
Dimension WxHxD (mm)	410 x 286 x 65 mm	556 x 347 x 65 mm
Power supply	24 V DC (18 to 32 VDC)	+ 24 V DC (18 to 32 VDC)
Dimensions		
Dimension W×H×D (mm)	410 x 286 x 65 mm	556 x 347 x 65 mm
Cut-out dimension W×H (mm)	N/A	539 x 331 mm
Mounting depth mm. (Including clearance)	The sealed model is mounted on VESA bracket or similar and therefore the mounting depth is the same as dimension.	57 (157) mm
Mounting	Panel Mount, VESA 100 x 100	Panel Mount, VESA 75 x 75
Weight	4.8 kg	7.38 kg
Environment and certification		
RoHS compliance	DIRECTIVE/2011/65/EU	
WEEE compliance	DIRECTIVE/2012/19/EU	

¹ For detailed information on each module, please visit: 800xahardwareselector.com