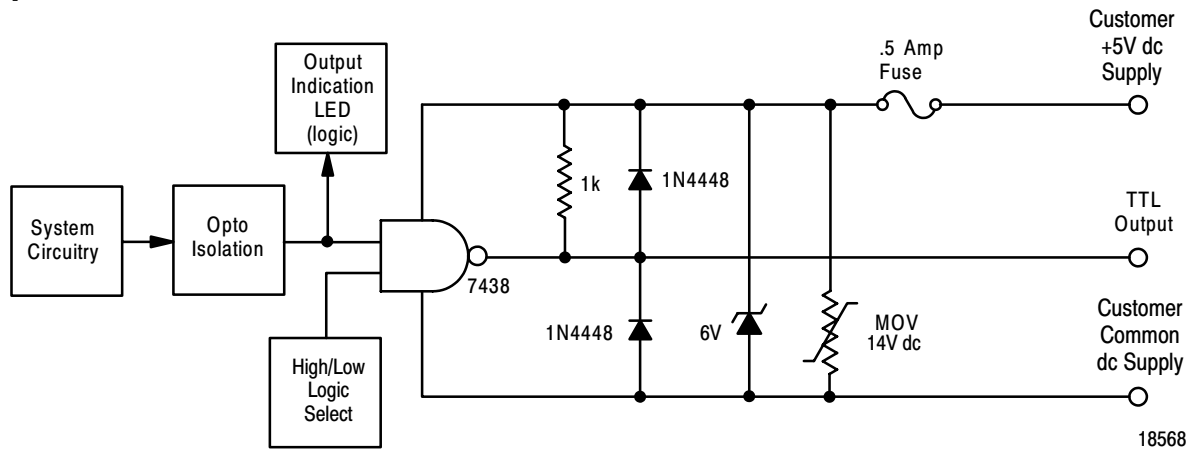


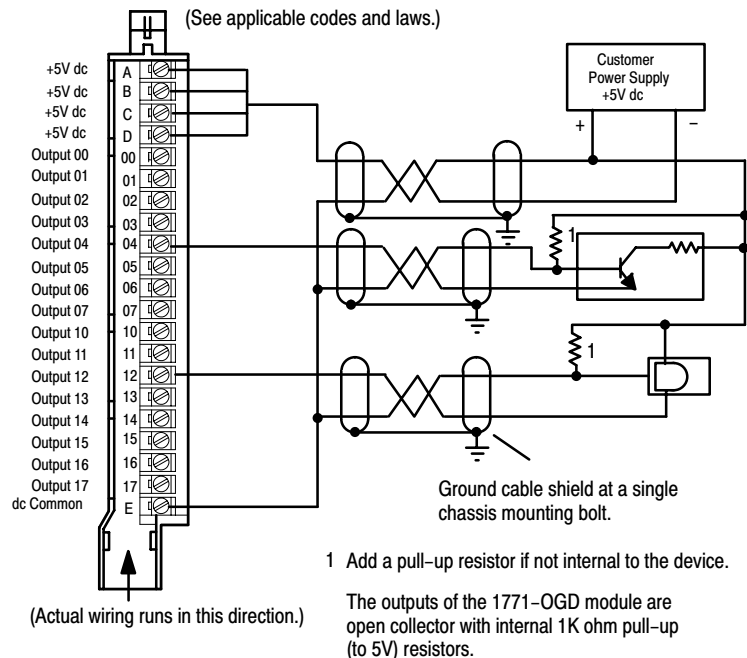
DC Output Module (Cat. No. 1771-OGD Series B)**Simplified Schematic****Application Notes**

Device Compatibility. The TTL output module must be used in a series B 1771 I/O chassis. You can use any TTL device that meets the input logic level specification of $-0.2V$ dc to $+0.8V$ dc (low), and $2.0V$ dc to $5.25V$ dc (high).

Connection to Input Modules. Output terminals of the TTL output module (cat. no. 1771-OGD) may directly drive the inputs of the TTL input module (cat. no. 1771-IGD). Connect the cable shield between modules at one end only.

Status Indicators. The module has 18 status indicators. The green top indicator, labeled "ACTIVE," is on when the fuse is good. The green bottom indicator, when on, indicates you selected high-true logic. When off, it indicates you selected low-true logic. Each of the 16 red status indicators light when their corresponding output terminal delivers TTL voltages in the true state.

Module Application. You can select the operating logic of the module using the logic switches located in the module. Choose between "High = True" or "Low = True" logic.

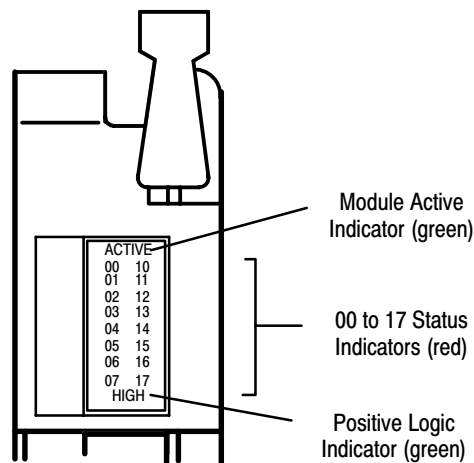
Connection Diagram

10444-I

DC Output Module (Cat. No. 1771-OGD Series B)**Specifications (1771-OGD/B)**

Outputs per Module	16
Module Location	Series B 1771 I/O chassis
Output Voltage Range	
HIGH = TRUE	ON: 2.0 to 5.25V dc OFF: -0.2 to +0.8V dc
LOW = TRUE	ON: -0.2 to +0.8V dc OFF: 2.0 to 5.25V dc
Maximum Output Current	Source: 1mA; Sink: 20mA
Customer Supply Voltage	5V dc ($\pm 0.25V$) 50mV peak-to-peak ripple max.
Customer Supply Current per Module	310mA max.
Output Signal Delay	Less than 1ms
Power Dissipation	2.8 Watts (max.); 1.0 Watts (min.)
Thermal Dissipation	9.5 BTU/hr (max.); 3.4 BTU/hr (min.)
Backplane Current	230mA max.
Isolation Voltage	1500V ac rms
Environmental Conditions	
Operational Temperature	0° to 60°C (32° to 140°F)
Storage Temperature	-40° to 85°C (-40° to 185°F)
Relative Humidity	5 to 95% (without condensation)
Conductors	Wire Size
	14 gauge (2mm ²) stranded maximum
	3/64 inch (1.2mm) insulation maximum
	Cable Category
	Shielded (Belden 8761)
	2 ¹
Fuse	0.5A 250V Normal Blow
Keying	Between 16 and 18 Between 26 and 28
Field Wiring Arm	Catalog Number 1771-WH
Wiring Arm Screw Torque	7-9 inch-pounds
Agency Certification (when product or packaging is marked)	<ul style="list-style-type: none"> • CSA certified • CSA Class I, Division 2 Groups A, B, C, D certified • UL listed • CE marked for all applicable directives
Installation Instructions	1771-2.176

¹ You use this conductor-category for planning conductor routing as described in the system-level installation manual.

Status Indicators

10445-I